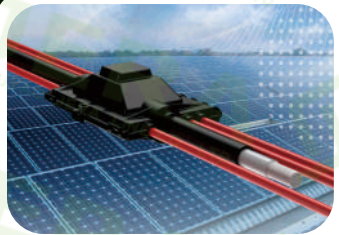
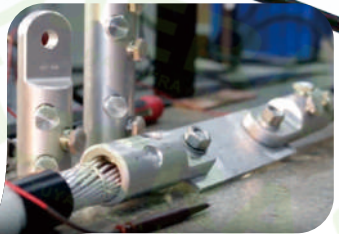


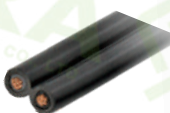
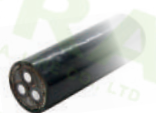
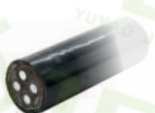


JERA LINE
CHINA NINGBO YUYAO FACTORY

**ECONOMY
RELIABILITY**



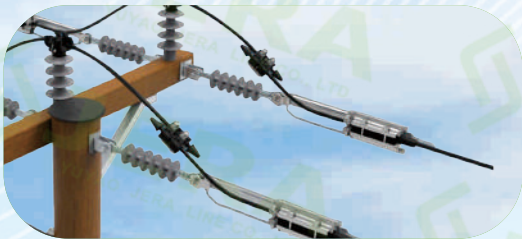
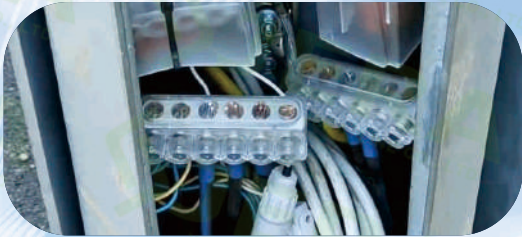
**JERA LINE - CHINA FACTORY
OUTDOOR CABLE SOLUTIONS FOR**



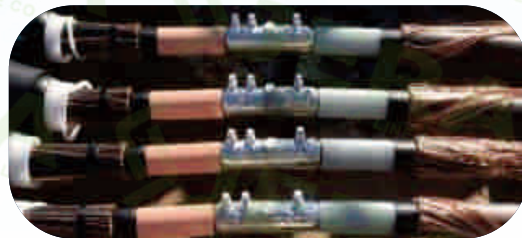
LV ABC MV ABC LV XLPE MV XLPE PV TAP PV BUS SPECIAL ACSR

APPLICATION AREAS

LV & MV OVERHEAD CABLES



LV & MV UNDERGROUND CABLES



OUR SOLUTIONS

page 10

**LV Street light
cable connectors**

page 12

**LV Overhead
line accessories**

page 19

**LV Overhead line
protection accessories**

page 21

**MV Overhead
line accessories**

**MV Overhead Hot Line
& earthing Accessories**

page 23

**Strand & stay pole wire
accessories**

page 25

**LV & MV Cable Jointing &
Terminating accessories**

page 27

**Solar Cable
Harness System**

page 31



COMPANY PROFILE

JERA LINE is a direct factory from China committed to produce reliable quality and affordable budget solutions for aerial and underground cables.

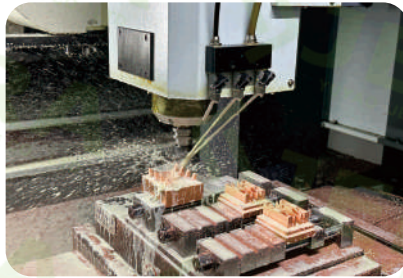
We use modern production technologies, cost-efficient processing solutions and automation equipment to achieve high efficiency production. And we have internal laboratory and experienced engineers to proceed essential quality test conform to EN50483-4, IEC-61238-1, NFC 33020 for daily inspection or new product development.



FACTORY



Plastic molding



CNC metals



Guy grips



Press forming



Mold processing



lathe machine



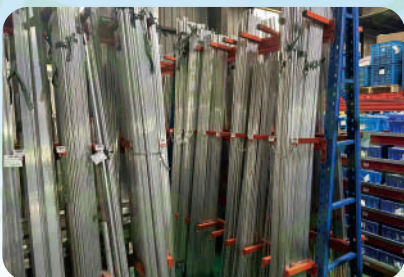
Products Assembly



CNC



Stainless steel band



Raw material warehouse



Semi-finished warehouse

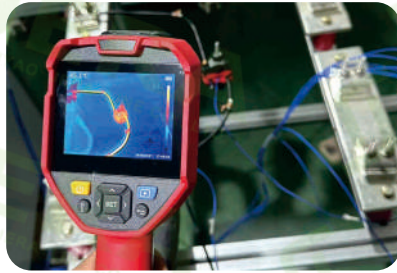


Finished product warehouse

LABORATORY



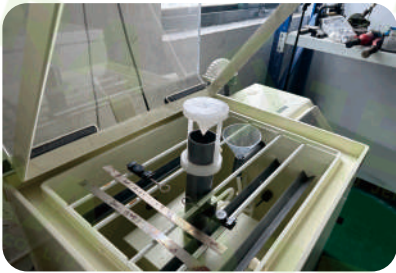
Electrical aging testing equipment



Thermal Imaging camera



Low voltage varistor tester



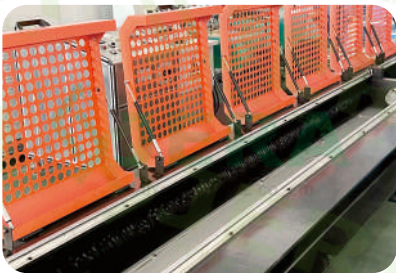
Salt spray and fog testing equipment



Solar Radiation & Temperature & Humidity aging equipment



Tracking and Erosion Test Equipment



Horizontal mechanical strength machine



Shear strength testing wrench

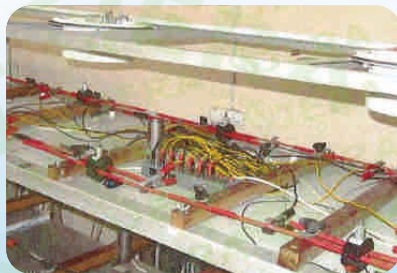


Chemical composition Analysis & validation

TESTING SCOPES



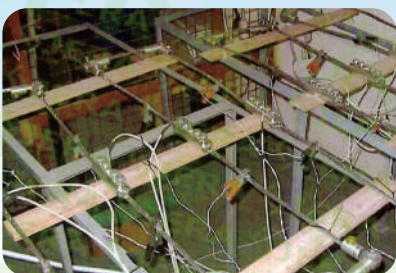
EN-50483



NFC-33020



NFC-33041



IEC-61238



EN-10088-2



ASTM A475-03

COMPANY ADVANTAGES

**ECONOMY
RELIABILITY**

**TYPE TESTS
IEC/EN/NFC**

**PRODUCT
WARRANTY**

**DIRECT
FACTORY**

**OFF
CATALOG NDA
PROJECTS**

**GLOBE
EXPERIENCE**

**OEM ODM
CUSTOMIZATION**

PRODUCT ADVANTAGES

LV IPC



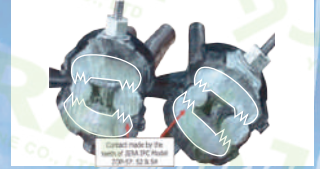
1 Comply with EN-50483-4 and NFC 33-020.



2 Application cable range from 1.5-400mm².



3 AL/CU cables usage.



4 Piercing technology, without stripping cable insulation.



5 Shear head off by a wrench, fast installation.



6 Shear head off by a hand.



7 JTN7 easy application.



8 Overmolding Rubber.



9 Multitap branching 2-6 ports.



10 Safety installation.

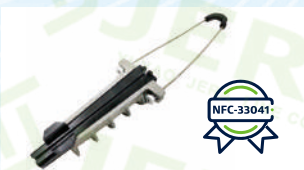


11 No more cable's stripping.



12 Test probe end cap.

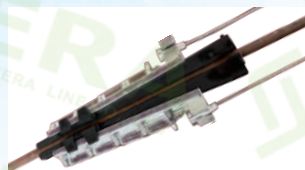
LV CLAMPS



1 Comply with standard NFC-33041.



2 Easy to install without any tools, save time.



3 Good performance of tension load.

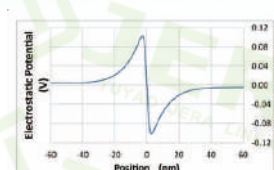


4 Stainless steel wire bail customized wire bail length.

MV CLAMPS



1 For MV Cover conductors.



2 Stabilize electrical potential.



3 Application cable range from 35-185mm.



4 Wild life safety.

MV IPCS



1 Comply to EN-50397



2 Piercing thickness 1.5-4.5mm



3 Comply with earthing bracket



4 Non-magnetic material

LV/MV CLB/CCB



1 Comply with IEC-61238-1.



2 High current capacity



3 Switchgear application



4 Easy Operation with a hex key to tighten the bolts.



5 Durable material, high mechanical strength



6 Apply with heat shrink or cold shrink.



7 LV cable: 4-400mm²
MV cable: 16-1000mm².



8 Central ring for 36 KV overvoltage protection.



9 Comply to EN-50483.



10 Application cable range from 16-400mm².



11 Less SKU.

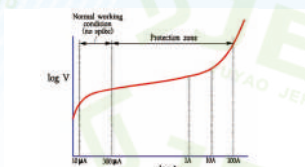


12 Shear head torque guarantee, proper electricity contact.

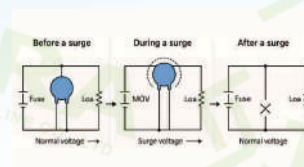
LV PROTECTION



1 Comply to IEC-61643



2 over current.



3 over voltage.



4 Anti Vandal Safety.

S/S BANDS & BUCKLES



1 Comply with standard EN 10088. AISI



2 Reinforced T.M-version for higher strength.



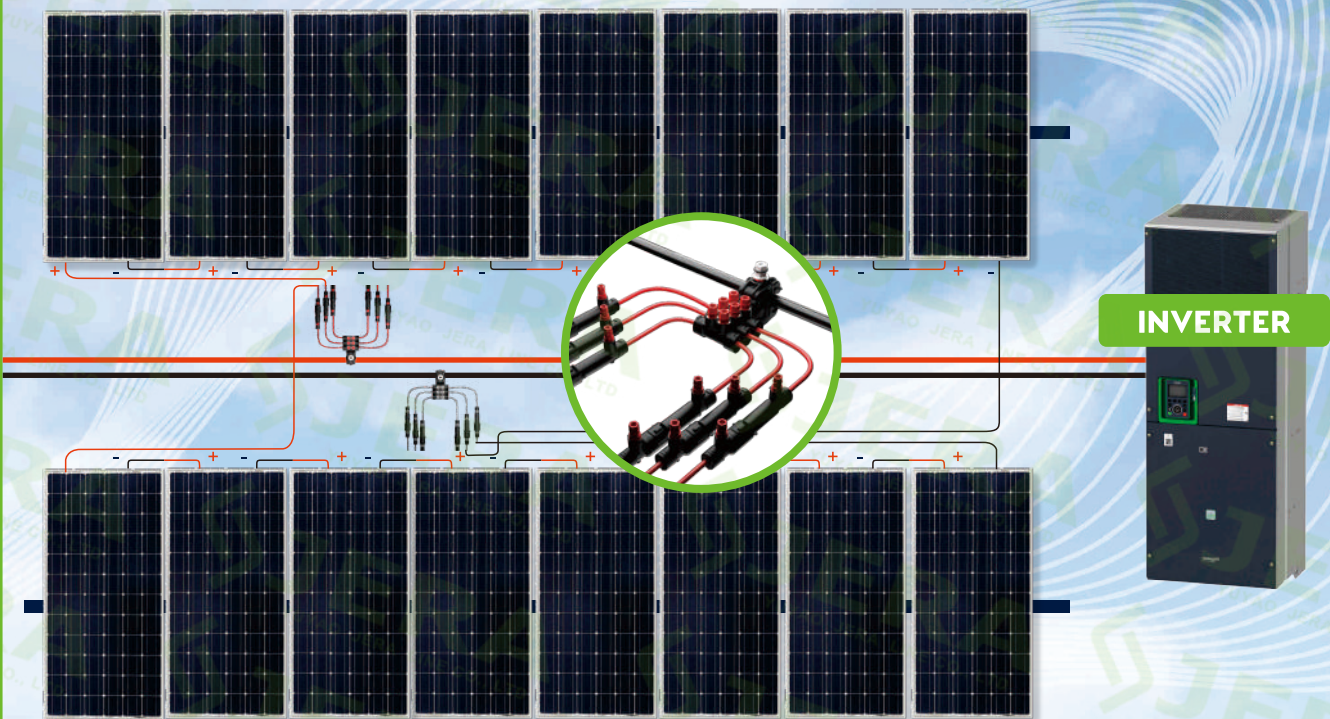
3 No lacking length, width, thickness in box.



4 Dispenser is easy to carry, you can roll back the slack of band.

SOLAR SOLUTION

CABLING LAYOUT BASED ON JERA'S CONNECTORS



- LESS CABLE LENGTH
- LESS INSTALLATION TIME AND SKILLS
- MINIMIZE TRANSMISSION LOSSES BY CABLE PIERCING TECHNOLOGY

23%

TIME SAVING

- Less civil work
- No more cable stripping no combiner box use

25%

COST SAVING

- Less cable length
- Less operators needed and with lower skills
- Suspended cable system: quicker & easier to install

50%

LOSSES SAVING

- Minimize network losses
- Larger cable section
- Reduced contact resistance

100%

RELIABILITY

- Proven IPC technology
- Optimized fuse ventilation



ABSENCE OF MAINTANANCE



LV STREET LIGHT CABLE CONNECTORS



CONNECTING LIGHTING POLES

TERMINAL BLOCKS

Technical specification



Product name	Cross section,mm ²
KE 10	AL 10-35/Cu 1.5-25
KE 10.1	4x(AL 10-35/Cu 1.5-25)
KE 10.3	6x(AL10-35/Cu 1.5-25)
KE 10.504	4x(AL 10-50/Cu 2.5-35)
KE 10.506	6x(AL 10-50/Cu 2.5-35)
SV-15	3xKE-10.1+1xKE-10.3+wire
SV-50	3xKE-10.504+1xKE-10.506+wire
CT-2	(2*50/2*35)+1x6
CT-3	(3*50/4*35)+2x6
CT-4	(4*50/4*35)+3x2.5
CT-6	(6*50/6*35)+3x2.5

1.Connection is made using a and cable terminal blocks.



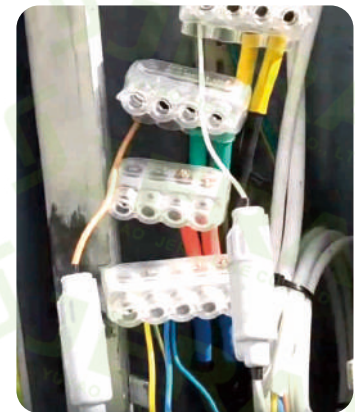
2. A power wire with grounding is output from the connected lamp inside the support, the phase wires are connected through the fuse housing with a 6A-10A fuse, the connection is made according to the site specification diagrams.

FUSE HOLDERS,FUSE LINKS

Technical specification



Product code	FH-154	Fuse link 10x38
Cable size, mm ²	1.5-4	-
Fuse cassette size, mm	10*38	10*38
Voltage	AC: 0.4-1	400
Rated current, A	2-10	2.4,6,10

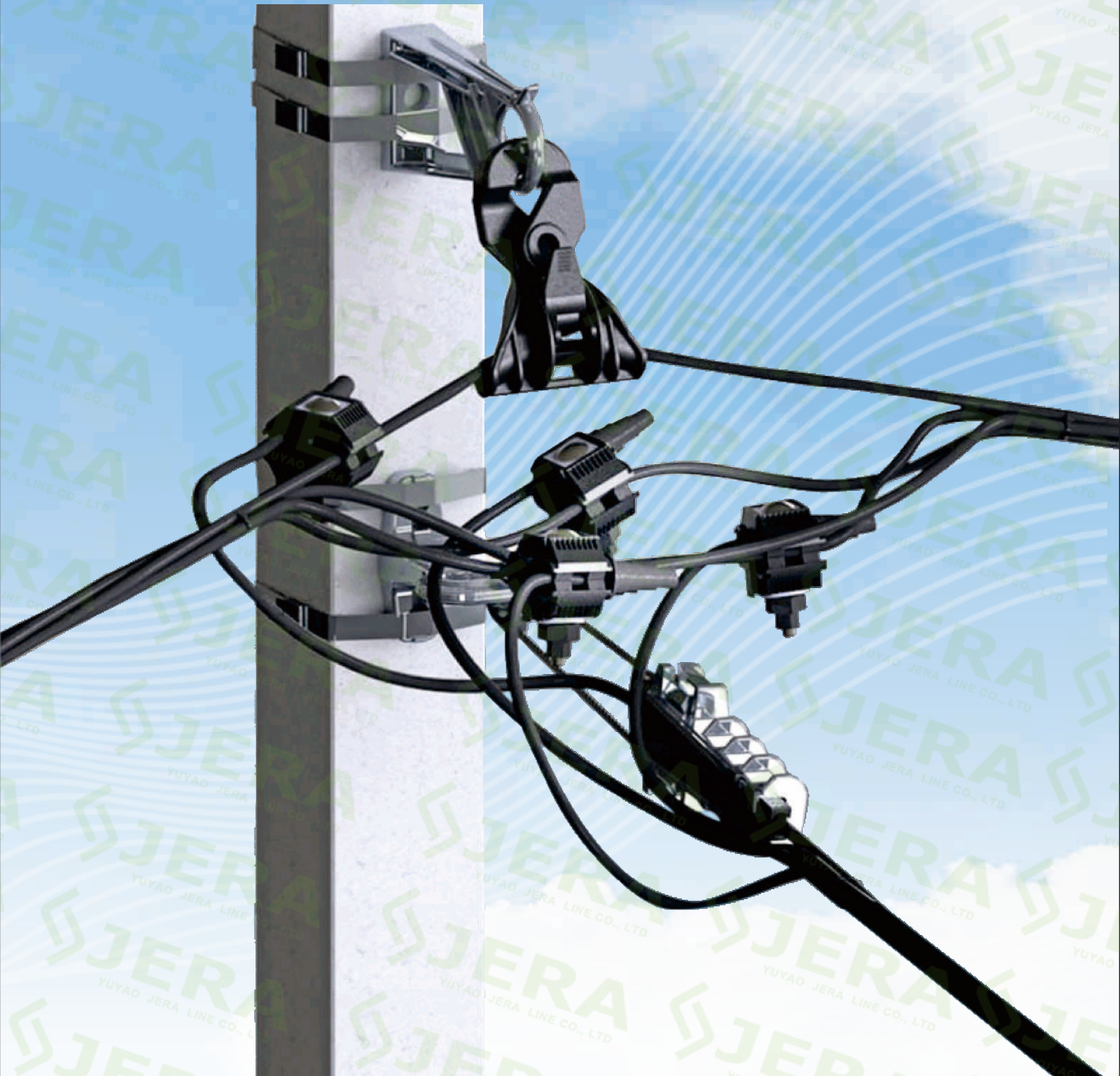


INSULATION PIERCING CONNECTORS

Technical specification



Product code	ZOP-25P	ZOP-25	ZOP-45P
Main line, mm ²	2.5-35	4-35	4-70
Branch line, mm ²	1.5-10	1.5-10	1.5-16
Torque, N*m	7	7	5



LV OVERHEAD LINE ACCESSORIES



LV IPC UP TO 1KV FOR INSULATED CABLES

Technical specification

					
Product code	ZOP-25P	ZOP-25	ZOP-45P	ZOP-45	ZOP-50
Main line, mm²	4-35	4-35	4-70	4-120	16-120
Branch line, mm²	1.5-10	1.5-10	1.5-16	1.5-16	1.5-16
					
Product code	ZOP-32	ZOP-52	ZOP-2	ZOP-2.T	ZOP-33
Main line, mm²	70-185	16-185	16-95	16-95	35-185
Branch line, mm²	1.5-6	1.5-16	4-35	6-35	6-35
					
Product code	ZOP-54	ZOP-57	ZOP-257	ZOP-58	ZOP-258
Main line, mm²	16-150	25-185	25-150	35-185	35-185
Branch line, mm²	4-50	25-95	25-95	35-185	35-185

LV FIRE PROVED IPC

Technical specification

				
Product code	ZOP-25F	ZOP-74F	ZOP-77F	ZOP-410F
Main line, mm²	4-35	16-120	35-185	240-400
Branch line, mm²	1.5-10	4-35	35-185	6-35

LV IPC FOR BARE TO INSULATED CABLES

Technical specification

						
Product code	ZOP-1N	ZOP-2N	ZOP-22N(L)	ZOP-22N(LX)	ZOP-P21	ZOP-P71
Main line, mm²	16-95	16-120	10-95	10-95	10-25	35-95
Branch line, mm²	1.5-10	4-35	10-95	1.5-70	2.5-35	4-70



MULTITAP INSULATION PIERCING CONNECTORS FOR LV UP TO 1KV

Technical specification



Product code	MTT-2-57	MTT-4-57	MTT-2-62	MTT-4-62	MTT-6-62
Main line	25-150	25-150	95-300	95-300	95-300
Branch line, mm²	2 x 4-35	4 x 4-35	2 x 4-35	4 x 4-35	6 x 4-35

LV TENSION AND SUSPENSION CLAMPS

Technical specification



Product code	STX	STI	STD	PA-800	PA-1000	PA-1500
Cable size, mm²	4-16	16-70	16-120	16-35	25-35	50-70
MBL,KN	1,5	2,0	2,0	8	10	15



Product code	PA-1600	PA-2200	ES-500	ES-800	PS-1200	ES-1500+(AL+PL)
Cable size, mm²	35-70	70-150	10-70	16-95	16-95	16-95
MBL,KN	16	22	4,5	8	12	8



Product code	STB	STF	STC	PA-157	PA-158	PA-450	PA-455
Cable size, mm²	2x16-25	4x10-35	4x10-35	2x10-50	4x10-50	4x25-50	50-150
MBL,KN	2	2	2	7	7	20	27



Product code	PS-130	PS-270	PS-125-50	PS-270-95	PS-3120
Cable size, mm²	16-120	25-150	4*25-50	4*70-95	4*120
MBL,KN	18	7	12	12	12



TENSION & SUSPENSION BRACKETS, HOOKS

Technical specification



Product code	BIC 15-50 / 50-95	YK-18	PS-8	CA-25	PB-16-300
MBL,KN	/	0.5	2	2	15
Materials	Nylon	UV resistant PA pdymer	galvanized steel	Aluminum alloy	Hot dip galvanized steel



Product code	BRPF-60	CA-800	ES-1500	B-16-300	CA-1500-1
MBL,KN	2	8	8	10	15
Materials	Metall, plastic	Aluminum alloy	Aluminum alloy	Hot dip galvanized steel	Aluminum alloy

PRE INSULATED LUGS UP TO 1 KV

Technical specification



Product code	CPTA-25...70	CPTA-95...150	CPTA(BI)-50...95	CPTA(BI)-120...150
Cable size, mm²	25...70	95...150	50...95	120...150
Installation method	Crimping Tool	Crimping tool	Crimping Tool	Crimping tool
Size of tool	E173	E215	E173	E215
Material	AL+Tn	AL+Tn	AL+Cu	AL+Cu



PRE INSULATED LUGS AND CONNECTORS UP TO 1 KV

Technical specification



Product code	ICL-16-95	ICL-2-70-240	ICL-185-400	ICLp-435	ICCp-435
Cable size, mm²	16-95	70-240	185-400	4-35	4-35
Number of bolts	1	2	2	1	2
Material	AL+Tn	AL+Tn	AL+Tn	AL+Tn	AL+Tn



Product code	ICL-BI-16-95	ICL-BI-2-70-240
Cable size, mm²	16-95	70-240
Number of bolts	1	2
Material	AL+Cu	AL+Cu

PRE INSULATED SLEEVE

Technical specification



Product code	MJPT-16...95	MJPT-N-54.6	MJPT-N-70
Cable size, mm²	16...95	54.6	70
Tool	E173	E173	E173



STAINLESS STEEL BANDS

Technical specification



Material grades, ASTM	AISI 201		AISI 304		AISI 316
Width	3/8" - 9.5 mm	1/2" - 12.7 mm	5/8" - 16.0 mm		3/4" - 19.0 mm
Thickness	0.015" - 0.40 mm	0.020" - 0.50 mm	0.025" - 0.64 mm	0.028" - 0.70 mm	0.030" - 0.75 mm
Length for roll, m	30 or 50	30 or 50	30 or 50	30 or 50	30 or 50
Colour of dispenser	Red	Green	Blue	Gray	Yellow

SELF TIGHTENING TIE

Technical specification



Product code	ZDZD	12.7x0.7-CHKO	KL-12.7-CHKO
Width, mm	10	12.7	12.7
Thickness, mm	0.4	0.7	0.7
Material, grade, SUS	C304	J201/C304	J201/C304
Length of roll, meters	0.8	30	1

STAINLESS STEEL BUCKLES, T.M-TYPE

Technical specification



Product code	KL-10-T	KL-13-T.M	KL-16-T.M	KL-20-T.M
Max band width	3/8" - 10 mm	1/2" - 12.7 mm	5/8" - 16.0 mm	3/4" - 20.0 mm
Material grades, ASTM	AISI 201, AISI 304	AISI 201, AISI 304	AISI 201, AISI 304	AISI 201, AISI 304

STAINLESS STEEL BUCKLES, LX AND LC TYPES

Technical specification



Product code	KL-13-L	KL-20-L	KL-20-LC	KL-20-LX
Max band width	1/2" - 12.7 mm	3/4" - 20.0 mm	3/4" - 20.0 mm	3/4" - 20.0 mm
Material grades, ASTM	AISI 201, AISI 304	AISI 201, AISI 304	AISI 201, AISI 304	AISI 201, AISI 304



BAND TOOLS

Technical specification



Product code	MBT-003	MBT-004	MBT-005
Max band width	< 20	< 25	6.4-20
Band thickness	0.8	< 1.5	< 0.75

INSULATED HOLDING TOOL

Technical specification



Product code	JTN-7
Dielectric strength	1000V

THE DIELECTRIC TORQUE WRENCH

Technical specification



Product code	JTN-12-13	JTN-11-17
Dielectric strength	1000V	1000V
Product Type	Wrench	Wrench
Size	13 mm, 1/2 Inches	17 mm, 1/2 Inches
Application voltage	<1000V	<1000V

CABLE CUTTING TOOL

Technical specification



Product code	JTN-400
Cable size	<400mm ²



LV OVERHEAD LINE PROTECTION



FUSE HOLDERS, FUSE LINKS

Technical specification



Product code	FHp-450	Fuse link 22x58	FH-156
Cable size, mm ²	4-50	-	1.5-4
Fuse cassette size, mm	22*58	22*58	10*38
Voltage	AC: 0.4-1	500	AC: 0.4-1
Rated current	-	32A	2-16A

LV SURGE ARRESTER, AND IPC FOR THEM

Technical specification



Product code	ZOP-9.22(L)	ZOP-23	ZOP-30
Cable	16-120 mm ²	10-95 mm ²	16-185 mm ²
Top	16-95 mm ²	1.5-70mm ²	-

Technical specification



Product code	SA-0.28/10	SA-0.44/5	SA-0.5/10	SA-0.66/5
Max allowable voltage, V	280	440	500	660
Voltage protection level, V	1100	1500	1680	2465
Nominal discharge current, kA	10	5	10	5
Maximum discharge current, kA	40	40	40	35

EARTHING ADAPTER

Technical specification



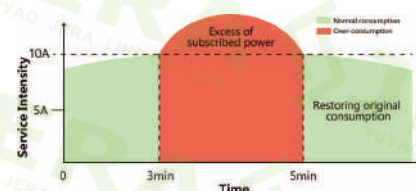
Product code	PMCC+ZOP-2
Main line, mm ²	16-95
Branch line, mm ²	4-35
Adaptor cable, mm ²	250

MINI-SWITCH

Technical specification



Currents	5A/10A/15A/20A
Voltage	230V
Size	Fuse link 22*58 mm





MV OVERHEAD LINE ACCESSORIES



MV IPC UP TO 36KV

Technical specification



Product code	ZOP-61	ZOP-62	ZOP-261	ZOP-262	END CAPS-300
Main line, mm²	35-185	70-240	35-185	70-240	
Branch line, mm²	35-185	70-240	35-185	70-240	95-300

MV TENSION & SUSPENSION CLAMPS UP TO 36KV

Technical specification



Product code	PA-2550	PA-2560	PS-181	JR-85
Cable type	Single core ABC	Single core ABC	Single core ABC	Single core ABC
Cable size, mm²	35-70	95-185	35-150	25-150
MBL,KN	20	28	30	35

HDPE INSULATOR / CABLE SPACERS

Technical specification



Product code	PPI-1-150-55	CS-1-15KV	PTI-1-150	PTI-2-400	PTI-3-350
Voltage	15	15	15	24	35

MV INSULATOR TIES UP TO 36KV

Technical specification



Product code	CO35 ... 300	TT-73-1318	TT-73-23-28
Cable size, mm²	Ø 12-36	Ø 13-18	Ø 23-28
MBL,KN	3.5	3.5	3.5

PG CLAMPS

Technical specification



Product code	PG-AL-16-120-15	PG-AL-16-120-25	PG-AL-16-120/16-95
Main line, mm²	16-120	16-120	16-120
Branch line, mm²	16-120	16-95	16-120



MV OVERHEAD HOT LINE & EARTHING ACCESSORIES



HOT LINE CLAMPS

Technical specification



Product code	JR-30	JR-31	JR-33
Main line, mm²	25-150	54-325	54.6
Branch line, mm²	16-95	22-240	-

BRACKETS

Technical specification



Product code	YK-23	YK-25
Main line, mm²	54.6	185

MV IPC UP TO 36KV

Technical specification



Product code	ZOP-61-G	ZOP-62-G
Main line, mm²	35-185	240-300
Branch line, mm²	70-120	70-120



STRAND & STAY POLE WIRE ACCESSORIES



MV INSULATOR TIES UP TO 36KV

Technical specification



Product code	JS-10	JS-22T	JS-30T	JS-38T	JS-38I
Cable size,mm	4,2	6,3	6,9	7,8	7,8
Torque, N*m	9	25	32	42	42

STAY WIRE INSULATOR

Technical specification



Product code	PSI-1
Cable size,mm	25-70
Breaking load, kN	130



LV & MV CABLE JOINTING & TERMINATING ACCESSORIES



LV MECHANICAL CONNECTOR AND LUG UP TO 1KV

Technical specification



Product code	CLBIT-6(4)-50	CLBIT-16-95	CLBIT-2-25-150	CLBIT-2-70-240	CLBIT-2-120-300	CLBIT-2-185-400
Cable size, mm²	6(4)-50	16-95	25-150	70-240	120-300	185-400
Number of bolts	1	1	2	2	2	2



Product code	CCBIT-2-6-50	CCBIT-2-16-95	CCBIT-4-25-150	CCBIT-4-70-240	CCBIT-4-120-300	CCBIT-4-185-400
Cable size, mm²	6(4)-50	16-95	25-150	70-240	120-300	185-400
Number of bolts	2	2	4	4	4	4

MV CENTRAL PALM CABLE LUGS

Technical specification



Product code	CLB-P-Vz-36-2-16-95	CLB-P-Vz-36-2-25-150	CLB-P-Vz-36-2-70-240	CLB-P-Vz-36-2-120-300
Cable size, mm²	16-95	25-150	70-240	120-300
Number of bolts	2	2	2	2

TWO HOLE PALM LUGS UP TO 36KV

Technical specification



Product code	CLB-2K-VzT-36-16-95	CLB-2K-VTz-36-2-25-150	CLB-2K-VTz-36-2-50-240	CLB-2K-Vy-36-3-185-400
Cable size, mm²	16-95	25-150	50-240	185-400
Number of bolts	1	2	2	3



MV MECHANICAL TERMINATIONS AND CONNECTORS UP TO 36KV

Technical specification



Product code	CLBVzT-36-2-16-95	CLBVzT-36-2-25-150	CLBVzT-36-2-70-240	CLBVzT-36-2-120-300
Cable size, mm²	16-95	25-150	70-240	120-300
Number of bolts	2	2	2	2



Product code	CLBVzT-36-3-185-400	CLBVzT-36-3-400-630	CLBVzT-36-4-630-1000
Cable size, mm²	185-400	400-630	630-1000
Number of bolts	3	3	4



Product code	CCBVzT-36-4-16-95	CCBVzT-36-4-25-150	CCBVzT-36-4-70-240	CCBVzT-36-4-120-300
Cable size, mm²	16-95	25-150	70-240	120-300
Number of bolts	4	4	4	4



Product code	CCBVzT-36-6-185-400	CCBVzT-36-6-400-630	CCBVzT-36-8-630-1000	CCBPT-2-120-185+TX-152
Cable size, mm²	185-400	400-630	630-1000	25-150
Number of bolts	6	6	8	2



BI-METAL BOLTED LUGS UP TO 36KV

Technical specification



Product code	CLBVzT-BI-36-16-70	CLBVzT-BI-36-2-50-150	CLBVzT-BI-36-2-95-240
Cable size, mm²	16-70	50-150	95-240
Number of bolts	1	2	2

LV MECHANICAL SHEAR HEAD OFF BRASS BOLT CONNECTOR

Technical specification



Product code	CLBVyT-0-2H-240-300
Cable size, mm²	240-300
Number of bolts	2

BI-METAL COMPRESSED LUGS UP TO 36KV

Technical specification



Product code	CAL-16B...400B
Cable size, mm²	16...400

HOLDING TOOL FOR MECHANICAL CONNECTORS & LUGS

Technical specification



Product code	JTN-10
Materials	Stainless steel, UV resistant plastic



OFF GRIDS SOLAR PLANTS



TAP-BUS PV CABLE HARNESS CONNECTORS

Technical specification

			
Product code	ZOP-300	ZOP-302	ZOP-410
Main line, mm²	95-300	95-300	240-400
Branch line, mm²	6-35	6-35	6-35

TAP-TAP PV & MULTITAP-BUS PV CABLE HARNESS CONNECTORS

Technical specification

		
Product code	ZOP-25P	ZOP-45P
Main line, mm²	4-35	4-70
Branch line, mm²	1.5-10	1.5-16

Technical specification

		
Product code	MTTc-1	MTTc-2
Main line, mm²	185-400	185-400
Branch line, mm²	2-6x4-35	2-12x4-35

FUSE HOLDER

Technical specification



Product code	fuse holder
Cable size, mm²	1.5-10
Fuse specification size, mm	10x85/14x85
Rated voltage, VDC	1500

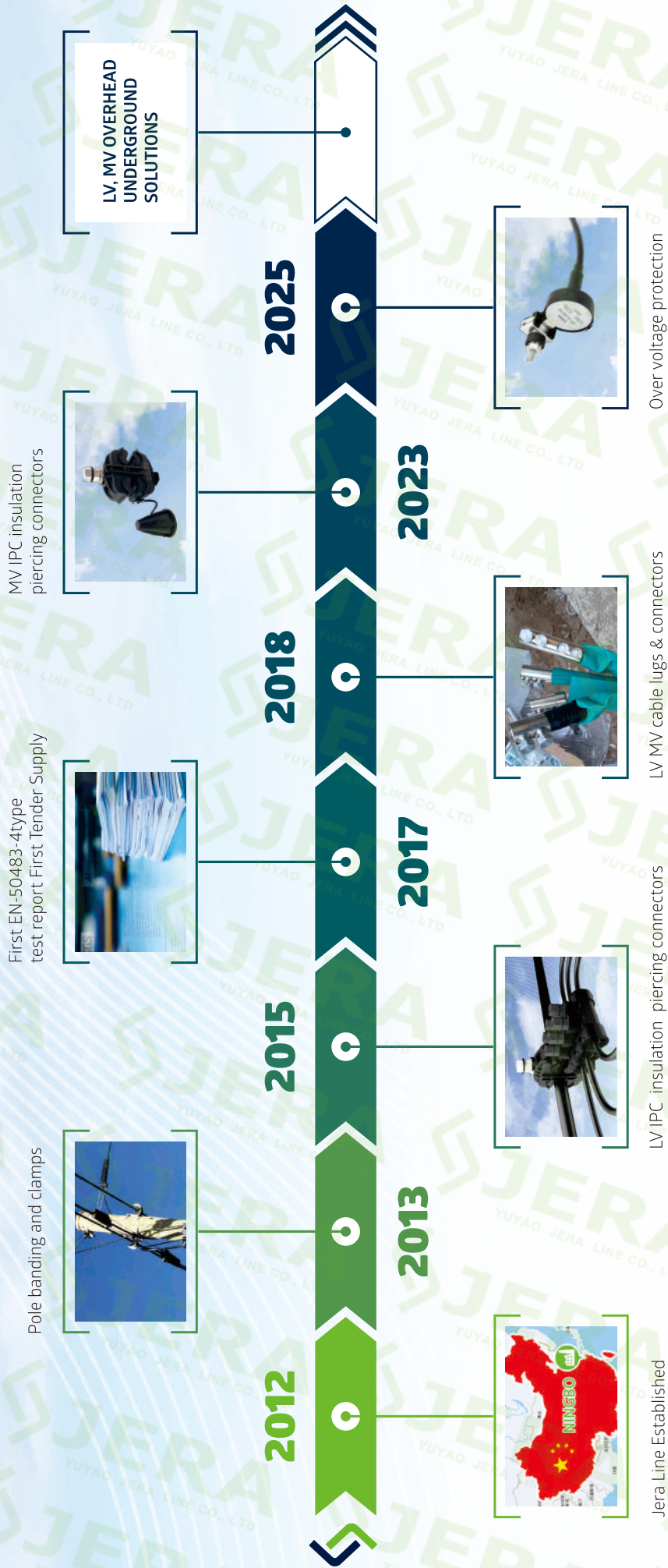
CABLE LUGS AND JOINTS FOR PV COMBINERS

Technical specification

			
Product code	ICL-16-95	ICL-2-70-240	ICL-2-185-400
Main line, mm²	16-95	70-240	185-400

JERA LINE'S APPROACH

ECONOMY
RELIABILITY



Thank you for your attention !

 WHOLE SOLUTION   Yuyao , Ningbo , China	 WHATSAPP   Info@jera-energy.com	 CATALOGUE   https://www.jera-energy.com/
--	--	---



Authorized distributor : _____

Print Date : Nov, 2025